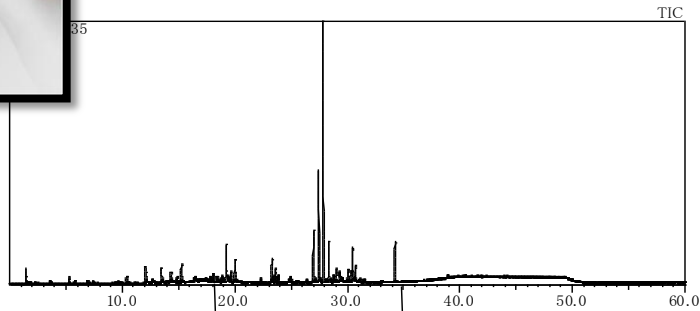


# Curie Point Injector JCI-22

## VOC Analysis From Tree (Cypress and Cedar)

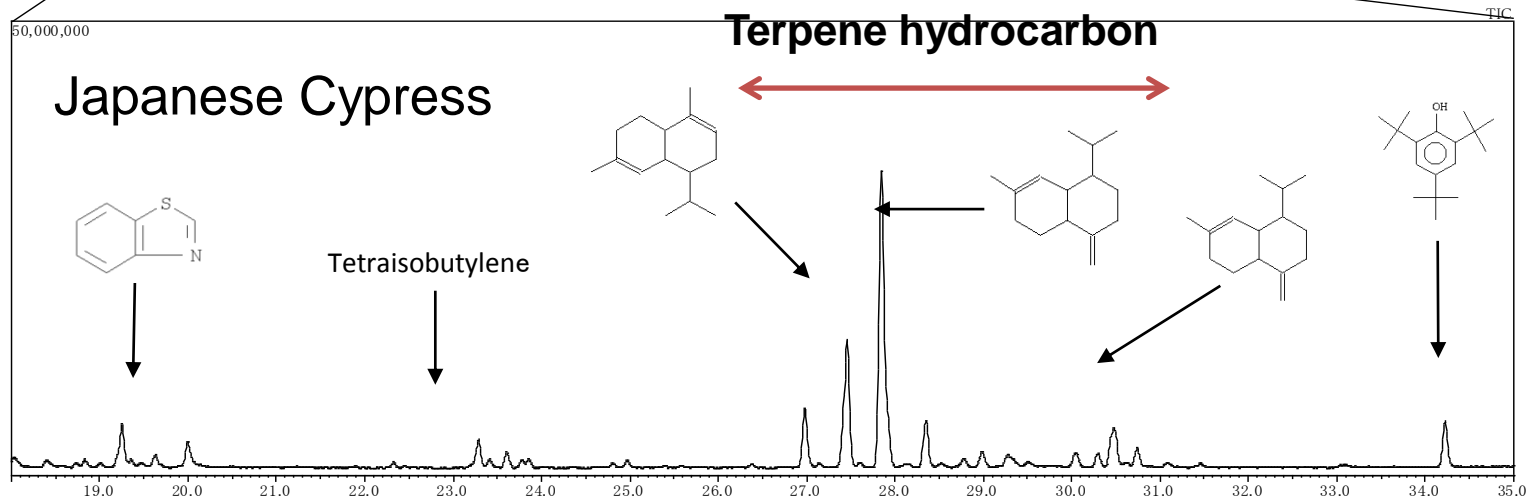


Put a piece of cypress (7.9g) into PFA chamber and flow with air sampler JAS-15M to trap

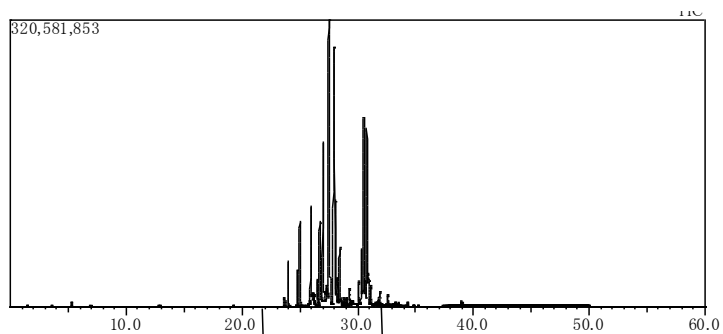


**mini-PAT with air sampler**  
 Quartz Glass Sample Tube  
 ID: 4mm Length: 36mm  
 Absorbent :Tenax GR 25mg  
 Pyrofoil :F280

RT: 18-35min

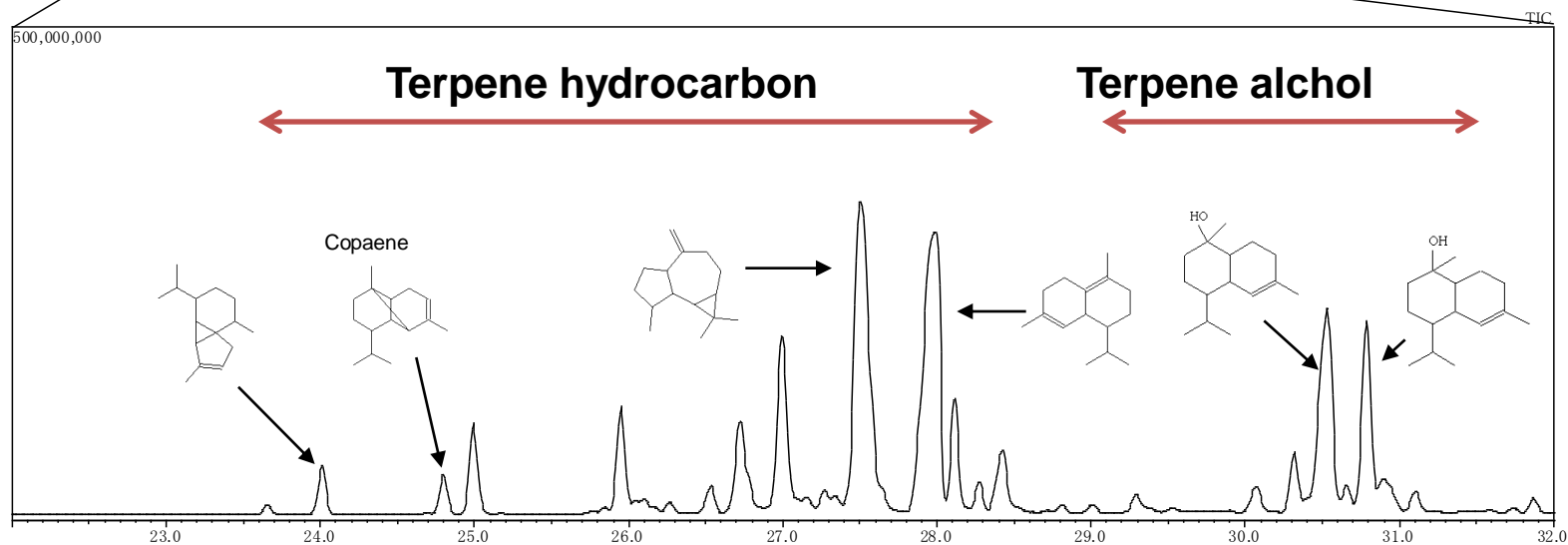


# Japanese Cedar



Put a piece of cedar (8.5g) into PFA chamber and flow with JAS-15M to trap

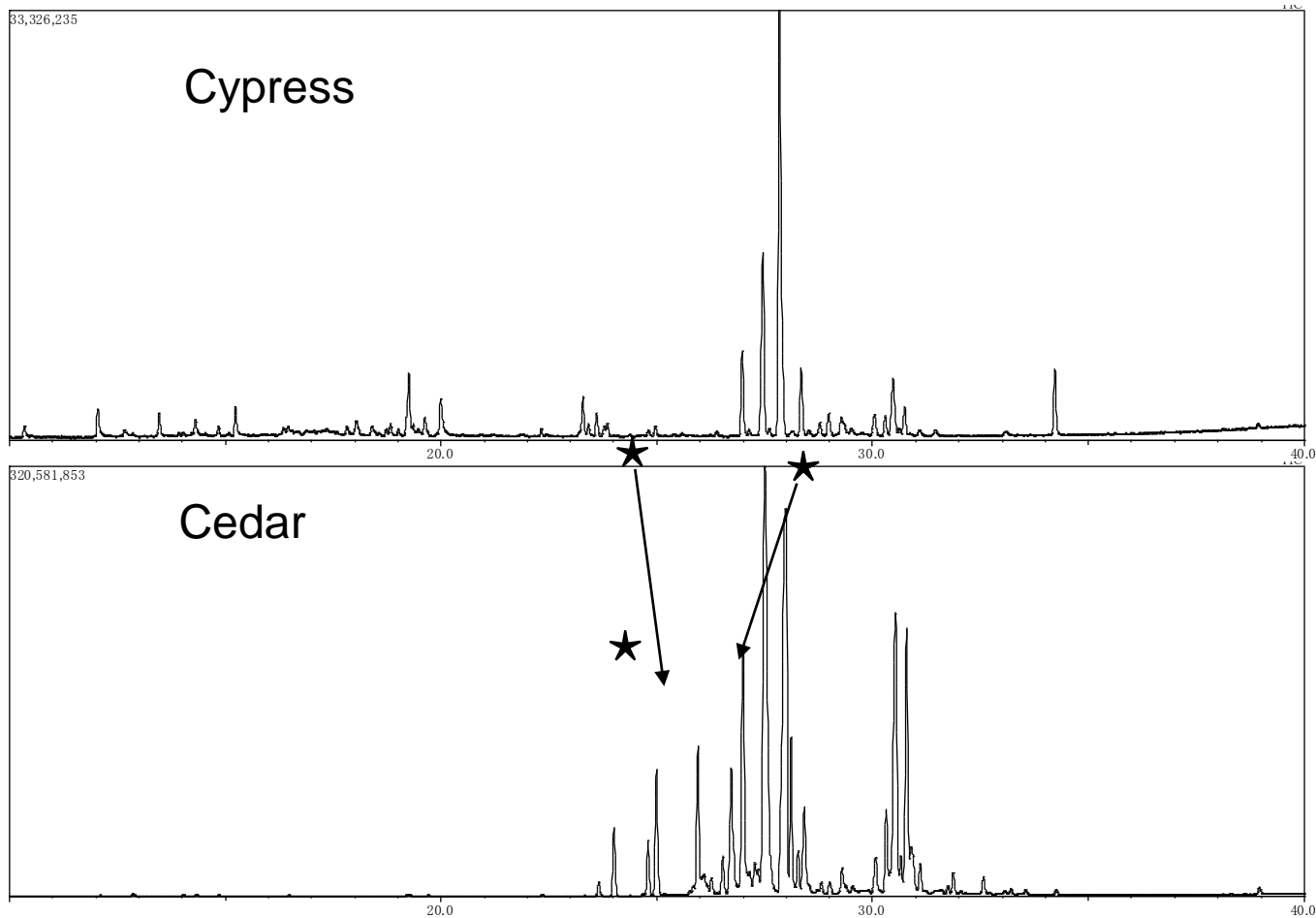
RT: 22-32min



JCI-22  
JAS-15M II

Japan Analytical Industry Co., Ltd

# Curie Point Injector JCI-22 VOC Analysis From Tree (Cypress and Cedar)



★ are only detected in cedar outgas